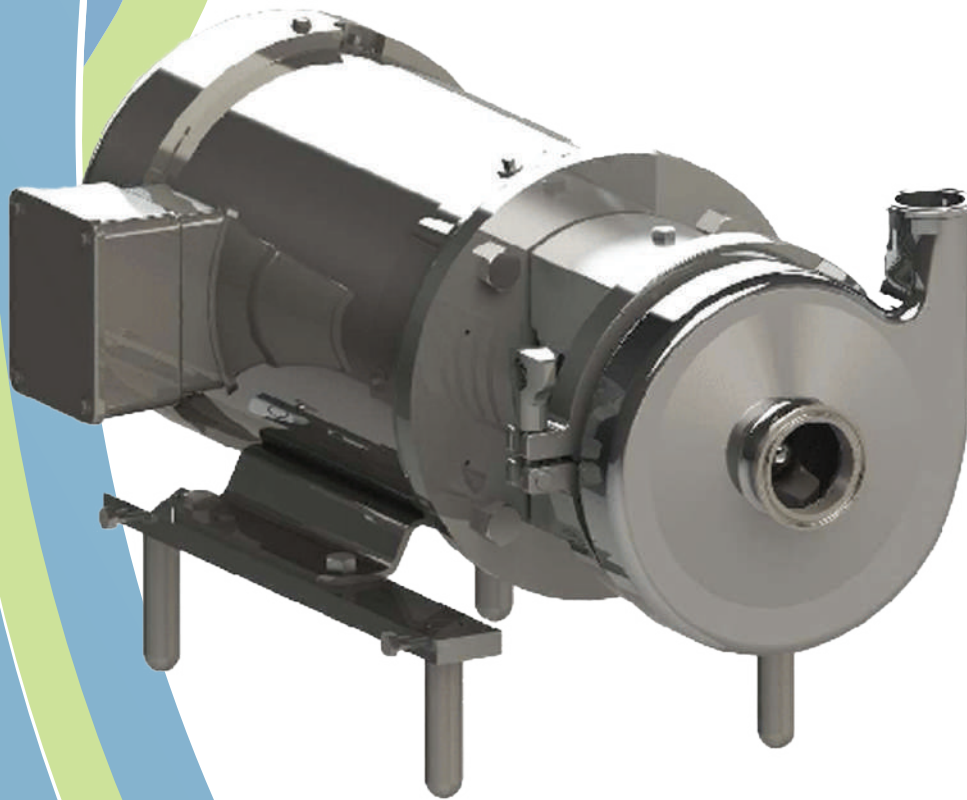


SEALING SYSTEMS

Engineering Equipment for Sanitary Applications

QC Series



QC / QC / IC Series

SEALING
SYSTEMS

Centrifugal Pumps

QC Sanitary Centrifugal Pumps are very versatile, pumping mainly low viscosity products (up to 600 cP) such as: **dairy products, juice, sodas, wine, beer, purified water, oil, alcohol, injectable and more.** This is a medium pressure and high flow series.

IC Series

The IC Series are manufactured in stainless steel and have the same design as the QC Series. An internal seal (non-sanitary) and the Kit plus conform this series with the purpose of solving non-sanitary applications such as acid solutions and residual water.



Characteristics

- Open impeller
- Volute casing with suction on the front center
- 3-A certified
- Conexiones: Clamp (estándar), Bevel Seat, DIN, SMS, NPT, Brida, Soldable.
- Stainless steel bracket assembly kit and legs
- NEMA (American) and IEC (European) standards available
- Work at high and low speed, 60 Hz and 50 Hz
- Stainless steel pump adapter
- Wet parts made of SS 316L

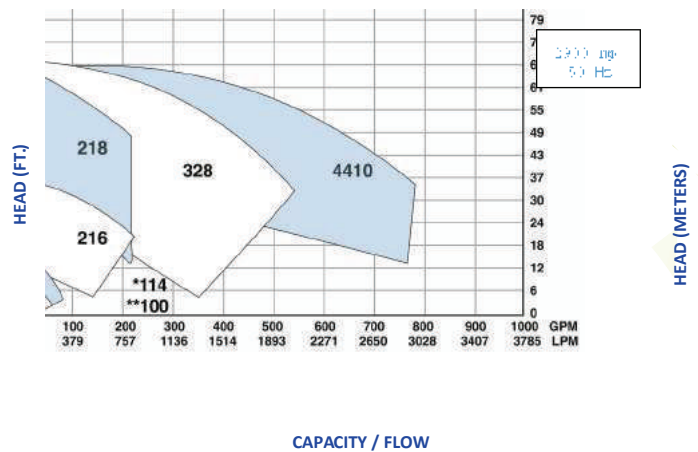
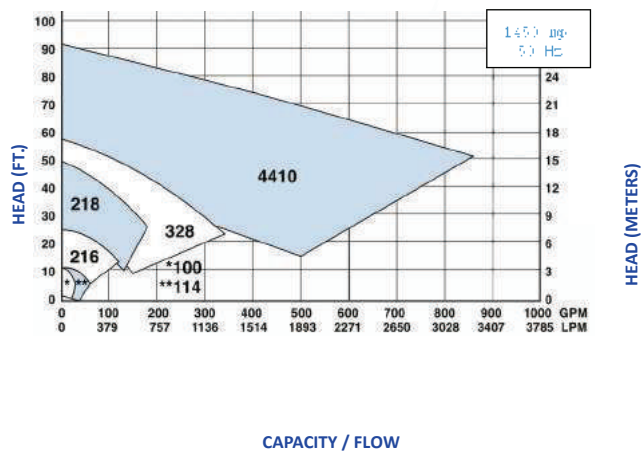
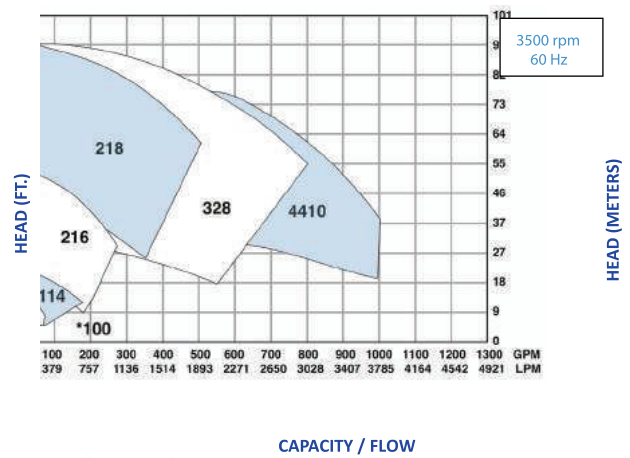
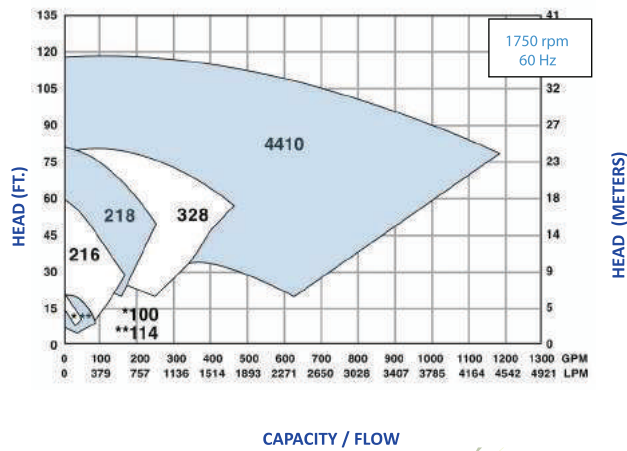
Kit and QC Series

The QC Series was developed to ease and expedite the assembly of the QC Series with some advantages.

This Series have a better fixation onto the motor shaft using a shaft collar. The shaft plus is threaded and the assembly to the impeller is with a key and a nut using gaskets to keep meeting 3-A standards. Any QC Series Pumps can be turned into a QC Series Pump with a Kit.



Performance Curves



Reference Data

Flow: 1,200 GPM / 4542 LPM

Head Pressure: 270 ft / 82 m / 117 PSI / 8 Bar

Viscosity: 600 cP

Temperature: 248°F / 120°C

